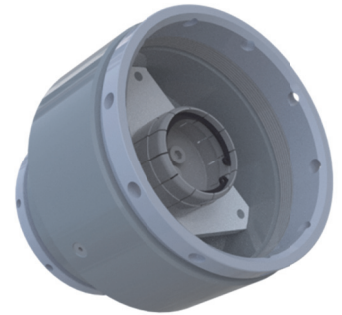


RYMSA RF manufactures coaxial adapters to enable the connection between two transmission line elements of any nature and line size. The adapters intended for indoor applications are unpressurized. Outdoor adapters are also available.

## Technical Specifications

Frequency range	DC-862 MHz	
Impedance	50 Ohm	
VSWR	<1.03:1	
Insertion loss	Negligible	
Maximum power handling	According to the smaller coaxial size	
Materials	Outer conductor	Aluminium
	Inner conductor	Silver plated aluminium or brass
	Isolators	PTFE
	Finishing	Galvanic plating protection
Temperature range	-10°C to +50°C	



## Models

Family	Model	Port1	Port2
7/16	TR00-001	DIN 7/16 female	N male
7/8"	TR21-031	EIA 7/8" flanged female	N male
	TR21-000	EIA 7/8" flanged male	DIN 7/16 female
1 5/8"	TR22-031	EIA 1 5/8" flanged female	N male
	TR22-301	EIA 1 5/8" unflanged female	N male
	TR23-331	EIA 1 5/8" unflanged male	N male
	TR22-000	EIA 1 5/8" flanged female	DIN 7/16 female
	TR22-300	EIA 1 5/8" unflanged female	DIN 7/16 female
	TR23-300	EIA 1 5/8" unflanged male	DIN 7/16 female
	TR22-001	EIA 1 5/8" unflanged female	DIN 7/16 male
	TR23-021	EIA 1 5/8" flanged male	EIA 7/8" flanged male
	TR22-021	EIA 1 5/8" flanged female	EIA 7/8" flanged female
	TR23-231	EIA 1 5/8" unflanged male	EIA 7/8" flanged male
3 1/8"	TR24-031	EIA 3 1/8" flanged female	N male
	TR25-331	EIA 3 1/8" unflanged male	N male
	TR24-522	EIA 3 1/8" unflanged female	EIA 1 5/8" unflanged female
	TR24-523	EIA 3 1/8" unflanged female	EIA 1 5/8" unflanged male
	TR25-322	EIA 3 1/8" unflanged male	EIA 1 5/8" flanged female
	TR25-522	EIA 3 1/8" unflanged male	EIA 1 5/8" unflanged female
	TR25-523	EIA 3 1/8" unflanged male	EIA 1 5/8" unflanged male
	TR25-123	EIA 3 1/8" flanged male	EIA 1 5/8" unflanged male
4 1/2"	TR30-031	IEC 4 1/2" flanged female	N male
	TR31-000	IEC 4 1/2" unflanged male	DIN 7/16 female
	TR30-000	IEC 4 1/2" flanged female	DIN 7/16 female
	TR30-522	IEC 4 1/2" unflanged female	EIA 1 5/8" unflanged female
	TR30-525	IEC 4 1/2" unflanged female	EIA 3 1/8" unflanged male
	TR31-324	IEC 4 1/2" unflanged male	EIA 3 1/8" flanged female
	TR30-024	IEC 4 1/2" flanged female	EIA 3 1/8" flanged female
	TR31-025	IEC 4 1/2" flanged female	EIA 3 1/8" flanged male
	TR30-030	IEC 4 1/2" flanged female	IEC 4 1/2" unflanged female
6 1/8"	TR27-031	EIA 6 1/8" unflanged female	N male
	TR26-000	EIA 6 1/8" unflanged female	DIN 7/16 female
	TR27-000	EIA 6 1/8" flanged male	DIN 7/16 female
	TR26-124	EIA 6 1/8" flanged female	EIA 3 1/8" unflanged male
	TR27-125	EIA 6 1/8" flanged male	EIA 3 1/8" unflanged male
	TR26-024	EIA 6 1/8" flanged male	EIA 3 1/8" flanged male
	TR27-025	EIA 6 1/8" unflanged female	EIA 3 1/8" flanged male
	TR27-531	EIA 6 1/8" unflanged male	IEC 4 1/2" unflanged male
	TR27-131	EIA 6 1/8" unflanged female	IEC 4 1/2" unflanged male
	TR26-331	EIA 6 1/8" flanged male	IEC 4 1/2" unflanged male
9 3/16"	TR71-026	EIA 9 3/16" flanged female	EIA 6 1/8" flanged female
	TR70-027	EIA 9 3/16" flanged male	EIA 6 1/8" flanged male