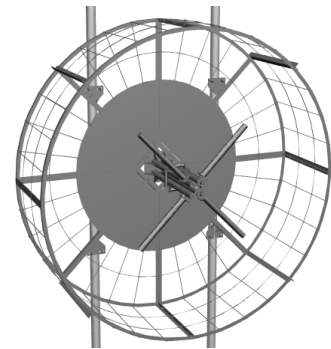


Band II 2 crossed dipoles circular/elliptical polarization cavity • Especially suitable for square masts

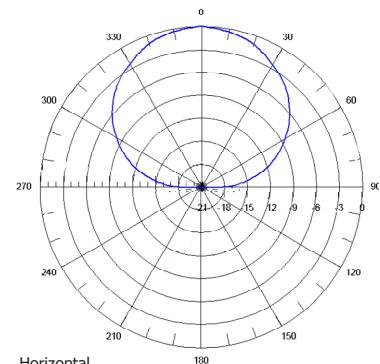
Electrical Specifications

Frequency Range	87.5-108 MHz		
Peak gain	7.2 dB (ref. $\lambda/2$ dipole)		
3 dB beam width	Horizontal: 68°	Vertical: 68°	
Polarization	Circular / Elliptical		
Impedance	50 Ohm		
VSWR	≤ 1.1:1 (with circular polarization)		
Maximum power handling (per connector)	5 kW (2.5 kW)	10 kW (5 kW)	14 kW (7 kW)
Connector type (2 per antenna)	2 x DIN 7/16	2 x EIA 7/8"	2 x DIN 13/30
Pressurization	Non pressurized	Gas barrier on input connector	
	Fully pressurized as an option		

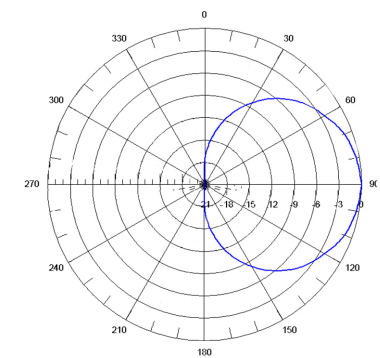


Mechanical & Environmental Specifications

Materials	Hot dip galvanized steel
Dimensions (W x D x H)	2700 x 986 x 2700 mm
Maximum wind speed	200 km/h
Wind load (front)	2320 N (@160 km/h)
Wind load (lateral)	1273 N (@160 km/h)
Weight	101 kg
Typical mounting	Square arrangement tower
Clamp type	To Ø 80 – 115 mm pipe
Vertical spacing	2800 mm
Grounding	DC grounded
Temperature range	-40°C to +80°C
Humidity	100%



Horizontal Radiation Pattern



Vertical Radiation Pattern

Antenna System Characteristics

Number of Bays	Number ant. per bay	Peak gain (dBd)	Weight (kg)	Wind load (@160 km/h)	System height (mm)
1	2	5.4	202	3.6 kN	2700
	3	3.7	303	4.9 kN	
	4	2.6	404	6.0 kN	
2	2	8.4	404	7.2 kN	5500
	3	6.7	606	9.7 kN	
	4	5.6	808	12.1 kN	
4	2	11.4	808	14.4 kN	11100
	3	9.7	1212	19.5 kN	
	4	8.6	1616	24.1 kN	
6	2	12.8	1212	21.6 kN	16700
	3	11.5	1818	29.2 kN	
	4	10.4	2424	36.2 kN	
8	2	14.4	1616	28.7 kN	22300
	3	12.7	2424	38.9 kN	
	4	11.6	3232	48.2 kN	

NOTES:

- Table supplies data up to 8 bays only for simplification purposes; systems with more bays are available.
- Null fill, beam tilt, harness & feeder losses NOT INCLUDED.
- Wind load & weight figures without considering cables, splitters & hardware.

The above specified gain must be understood for circular polarization